



DRIVER INSTALLATION GUIDE for Microsoft® Windows Vista™ PC

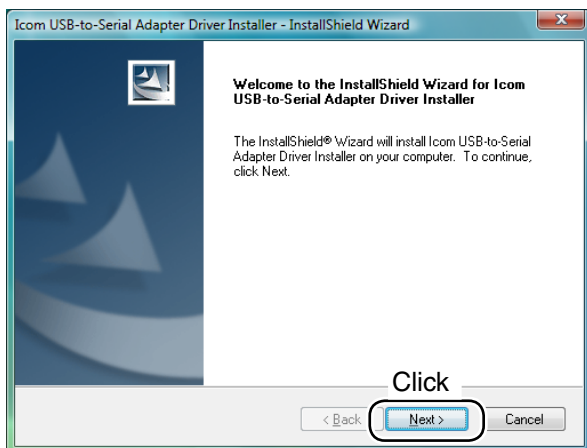
Please read this installation guide before installing the USB driver, supplied with the OPC-478UC/966U/1122U/1862, into a Microsoft® Windows Vista™ PC.

NOTE: The USB driver does not support for Microsoft® Windows Vista™ (64 bit).

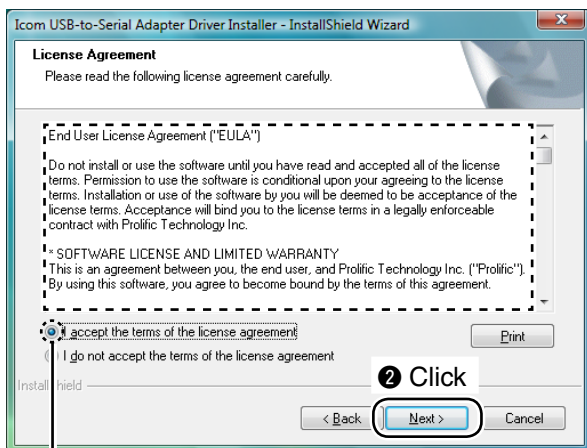
■ Installation

Recommendation!: Installing the USB driver before connecting the cloning cable is recommended. When the cloning cable is connected before installing the USB driver, see the back page for the USB driver installation details.

- ① Insert the supplied CD into the appropriate CD drive.
- ② Double-click the "ICOM USB DriverInstaller.exe" contained in the 'Vista(32bit)' folder of the CD.
- ③ "Welcome to the InstallShield Wizard for Icom USB-to-Serial Adapter Driver Installer" will appear as below. Click [Next >].

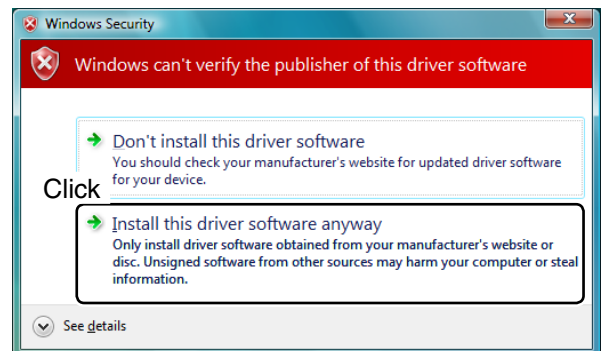


- ④ "License agreement" will appear as below. Read all the License agreement, then select "I accept the terms of the license agreement" if you agree. Click [Next >].

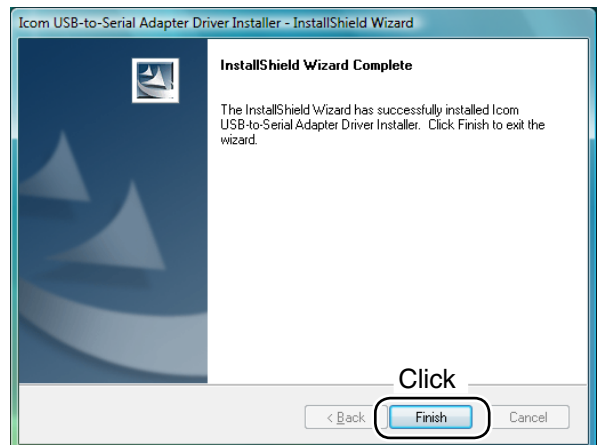


- ① Read the agreement, then select.

- ⑤ The dialog box will appear as below. Click "Install this driver software anyway" to start the USB driver installation.



- ⑥ After the installation is completed, "InstallShield Wizard Complete" will appear as below. Click [Finish].



- ⑦ Eject the CD, then restart the PC.
- ⑧ Connect the cloning cable to the PC.

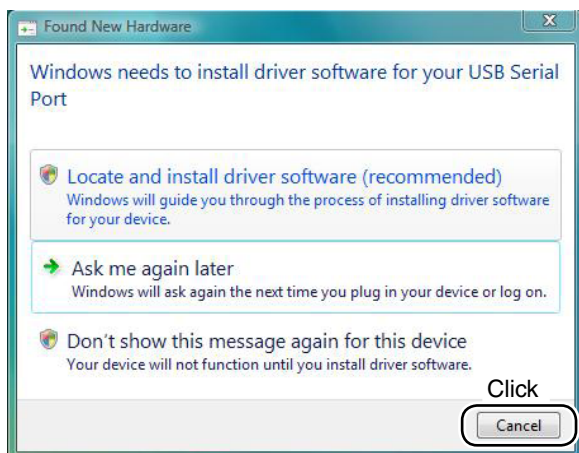
Icom, Icom Inc. and the ICOM logo are registered trademarks of Icom Incorporated (Japan) in the United States and/or other countries. Microsoft, Windows and Windows Vista are either registered trademarks or trademarks of Microsoft Corporation in the United States and/or other countries.

All other products or brands are registered trademarks or trademarks of their respective holders.

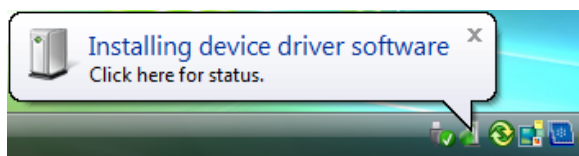
■ Installation—continued

◆ When the cloning cable is connected to the PC before installing the USB driver

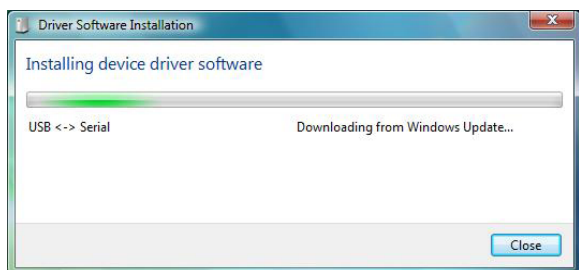
- ① “Found New Hardware” will appear as below when the cloning cable is connected .
Click [Cancel] at this time.



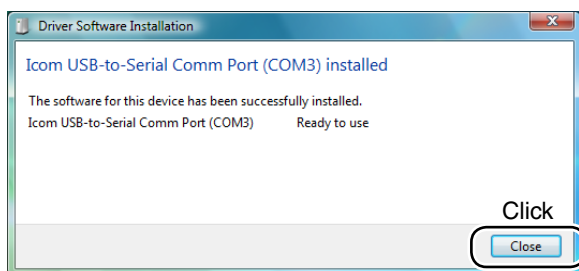
- ② Disconnect the cloning cable from the PC.
- ③ Install the USB driver as described on the front page.
- ④ Restart the PC.
- ⑤ Connect the cloning cable to the PC.
- ⑥ The dialog box will appear as below.
Click the box to start the USB driver installation.



- ⑦ Windows will start searching and installing the USB driver automatically.



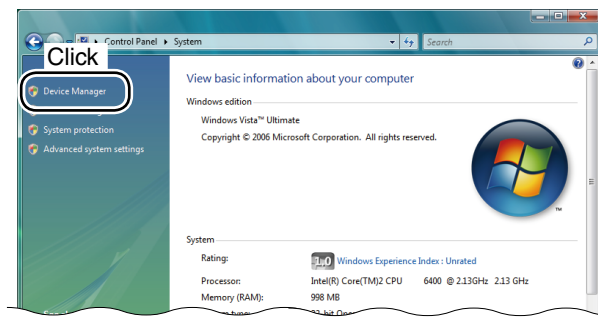
- ⑧ After the installation is completed, click [Close].



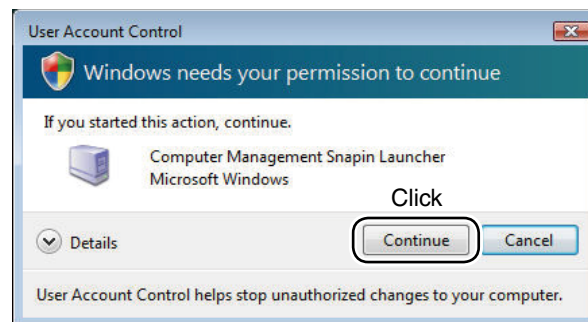
■ COM Port Confirmation

After the driver installation is completed, confirming the driver availability and the port number is recommended.

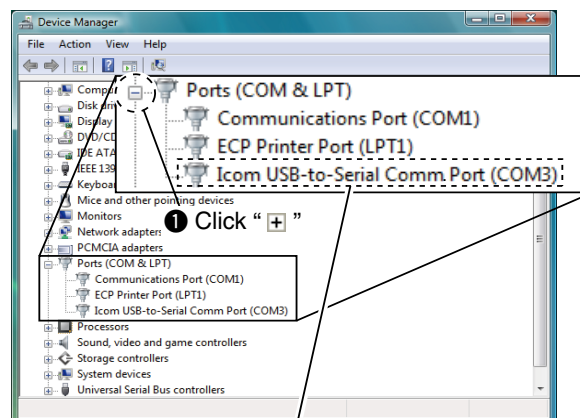
- ① Start up Windows.
- ② Connect the cloning cable to the PC.
- ③ Right click “Computer” then select “Properties.”
• “Computer” is located in <Start> menu with Windows Vista.
- ④ “System Properties” will appear as below.
Click [Device Manager].



- ⑤ In case “User Account Control” dialog box appears as below, click [Continue].



- ⑥ “Device Manager” will appear.
Click “+” of “Ports (COM&LPT).”
- ⑦ Confirm “Icom USB-to-Serial Comm Port (COM*)” is displayed.
• If not displayed, or some COM port numbers are displayed at the same time (e.g. “Icom USB-to-Serial Comm Port (COM*)” (COM*), the driver may not be installed properly. Un-install the USB driver, then re-install the driver again in such cases.



- ② Check the COM port number.
(In this example, the USB serial port number is “3”.)

NOTE: “*” is the COM port number, that is used for the communication setting with the utility software.